

MADE IN
ALABAMA

Alabama Department of Commerce

WAL.WORKS.COM

New Jobs



NEW JOBS

\$8.7
BILLION

New Capital
Investment*

17,026

New Jobs
Created

Source: Alabama Department of Commerce's 2018 New and Expanded Industry Report

 **AIDT** | WE ARE
WORKFORCE
DEVELOPMENT

MADE IN
ALABAMA

ALABAMA
WORKS!

2018 Auto Projects



2018 AUTO PROJECTS

\$3.3
BILLION

New Capital
Investment*

5,477

Anticipated
Jobs

Source: Alabama Department of Commerce estimates



2018 Rural Development



2018 RURAL DEVELOPMENT

\$1.1
BILLION

New Capital
Investment

1,128

New and Future
Jobs Created

Source: Alabama Department of Commerce estimates






We're working to elevate workforce development to a new level.



New Initiatives



New initiatives will fill the skilled worker pipeline.

- AlabamaWorks
- Alabama Office of Apprenticeship
- AIDT Recruitment Initiative
- Strong Start, Strong Finish
- Success Plus

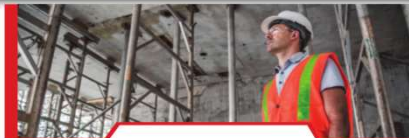


Success Plus will prepare Alabama for the future

- Goal: Add 500,000 high-skilled employees to Alabama's workforce by 2025
- Tactic: Address Alabama's skills gap by equipping workers with industry-recognized skills through certificates, credentials or degrees
- Outcomes: Support for additional growth, compete for new businesses, improve overall quality of life



Alabama Workforce Council



Governor's Office

Strong Start,
Strong Finish: An
Education-to-
Workforce Vision
for Alabama



Five Strong Start, Strong Finish benchmarks

1

Pre-k readiness to ensure that all of Alabama's four year old are prepared for an excellent early childhood education experience;

2

school readiness to ensure that all of Alabama's five and six year old enter kindergarten and first grade with advanced skills;

3

literacy and numeracy by age eight to ensure that all of Alabama's students are prepared to persist through difficult coursework and remain invested in school in advanced grades;

4

career exploration and discovery so that all students understand how to connect their interests and aptitudes with academic skills they learn in the classroom and the many career opportunities that exist across Alabama—children cannot know what they want to be unless they have seen the possibilities;

5

college and/or career readiness so that all students graduate high school prepared to enter into postsecondary education or into an occupation within a in-demand, high-wage field.



Attainment – Success Plus



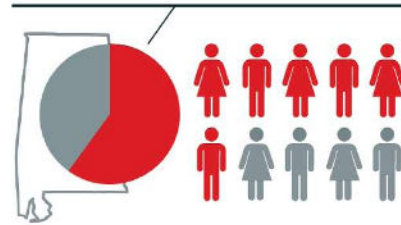
- Awareness
- Access and Success
- Pathways
- Leadership and Collaboration
- Assessment and Continuous Improvement

Attainment goal

+500,000

high-skilled employees to
Alabama's workforce by 2025

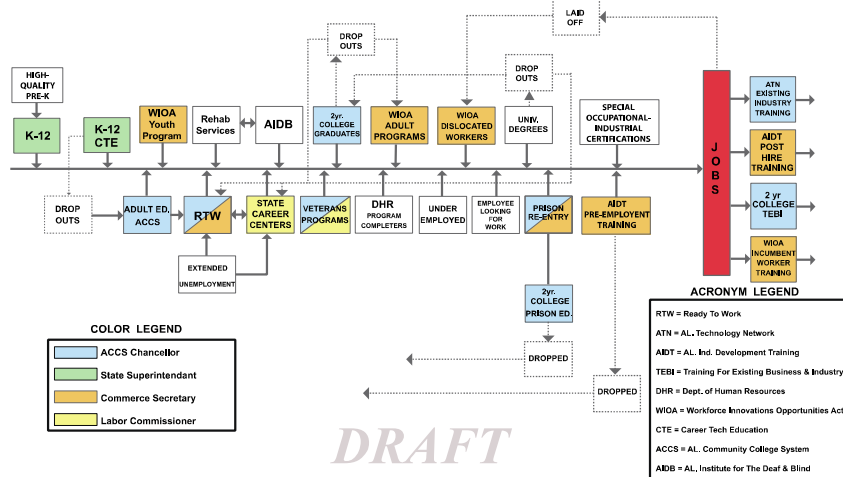
= 60% of the state's working age
population holding some type
of certificate, credential, or
degree of value



Alabama Department of Commerce



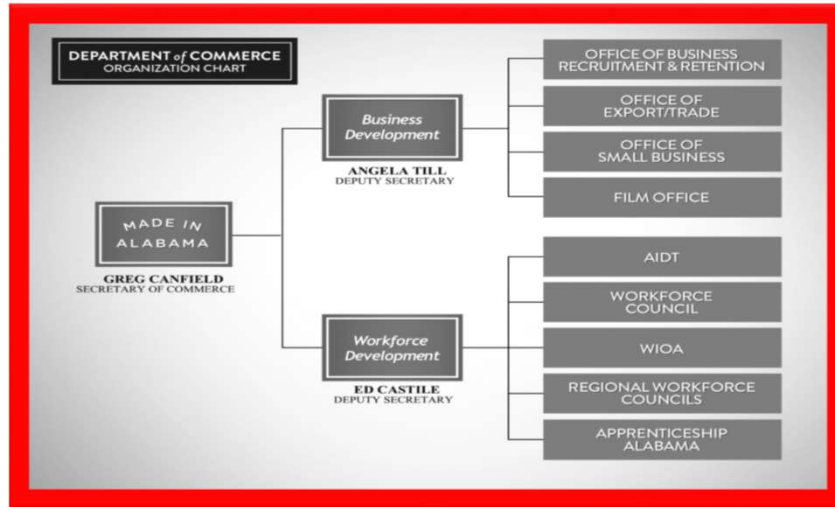
WORKFORCE DEVELOPMENT PIPELINE



DRAFT



Alabama Department of Commerce



REGIONAL WORKFORCE COUNCILS

7 REGIONS

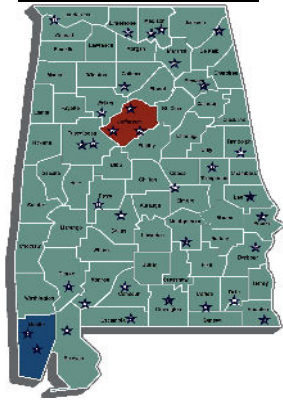


- Full-time staff in each Region
- RWC Liaisons for each Region
- Seven (7) Councils also serve as WIOA Local Board



WIOA Local Boards Realignment

Original 3-Workforce Area Map



7 REGIONS




WE ARE WORKFORCE DEVELOPMENT



ALABAMA OFFICE OF APPRENTICESHIP

Alabama Office of Apprenticeship supports industry-specific, on-the-job training, and classroom theory taught over a one to six year period. Employers provide apprentices with progressive wages, giving them an “earn while you learn” training experience that specifically meets a company’s workforce needs.

Industry Focused Sectors:

- Healthcare
- Construction/Carpentry
- Information Technology (IT)
- Distribution/Transportation/Logistics
- Advanced Manufacturing

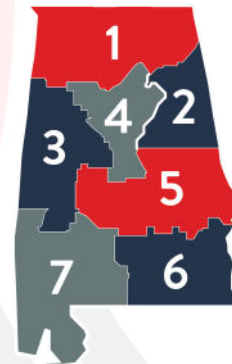
PROGRAM DIRECTOR
Josh Laney

Region 1
Katanga Mants
334.590.9402
kmants@aidt.edu

Region 2 & 4
Jessica Falls
205.601.5803
jfalls@aidt.edu

Region 3 & 7
Sophia Guan
334.274.8020
sguan@aidt.edu

Region 5 & 6
Patsy Richards
334.546.4984
prichards@aidt.edu




WE ARE WORKFORCE DEVELOPMENT



ALABAMAWORKS!

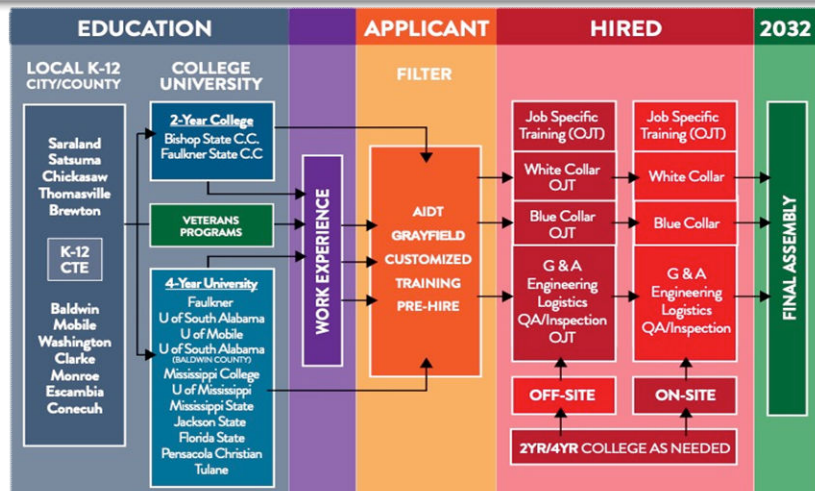


AIDT WE ARE WORKFORCE DEVELOPMENT

MADE IN ALABAMA



PROJECT



AIDT WE ARE WORKFORCE DEVELOPMENT

MADE IN ALABAMA





AIDT PARTNERSHIPS

- ◆ **Alabama Department of Commerce**
- ◆ **EDPA** – Economic Development Partnership of Alabama
- ◆ **Education:**
 - Alabama Community College System (*includes Adult Education*)
 - ATN – Alabama Technology Network
 - K-12
 - Universities
- ◆ **ADECA** – Alabama Department of Economic and Community Affairs
- ◆ **ADRS** – Alabama Department of Rehabilitation Services
- ◆ **Alabama Career Center System**
- ◆ **Local Economic Developers**



AIDT CENTERS OF EXCELLENCE



ROBOTICS TECHNOLOGY PARK



ROBOTICS TECHNOLOGY PARK PARKER, AL

GOODWYN | MILLS | CAWOOD



Robotics Technology Park- Phase 1



RTP
PHASE 1

RTP
PHASE 1



Robotics Technology Park



Mobile Training Unit



RTP Mobile Training Unit



Mobile Training Unit



MARITIME TRAINING CENTER



 **AIDT** | WE ARE WORKFORCE DEVELOPMENT

 MADE IN ALABAMA

 ALABAMA WORKS!

MARITIME TRAINING CENTER



 **AIDT** | WE ARE WORKFORCE DEVELOPMENT

 MADE IN ALABAMA

 ALABAMA WORKS!

AIDT TOTAL WORKFORCE DELIVERY SYSTEM

- ◆ **Applicant Recruitment**
- ◆ **Trainee Selection**
 - Application Reviews
 - Applicant Interviews
- ◆ **Pre-employment Training**
 - Skills/Capabilities/Learning Ability Demonstrated
 - Company Teamwork, Job Tasks Simulated
- ◆ **On-the-Job Training**
- ◆ **Media Services/Program Development**
- ◆ **Leadership Development**
- ◆ **Maintenance Assessment/ Training**
- ◆ **OSHA/Safety**
- ◆ **EMPACT**
- ◆ **AIDT Productions**
- ◆ **Specialty Centers:**
AWTC, MRWTC, RTP, MTC



ALABAMA AVIATION MANUFACTURERS



MAJOR PROJECTS



Mercedes-Benz



HONDA



TOYOTA



HYUNDAI



AIRBUS

MAZDATOYOTA



POLARIS

Remington



GE Aviation



LOCKHEED MARTIN



ArcelorMittal

outokumpu



AUSTAL



MADE IN
ALABAMA

Alabama Department of Commerce